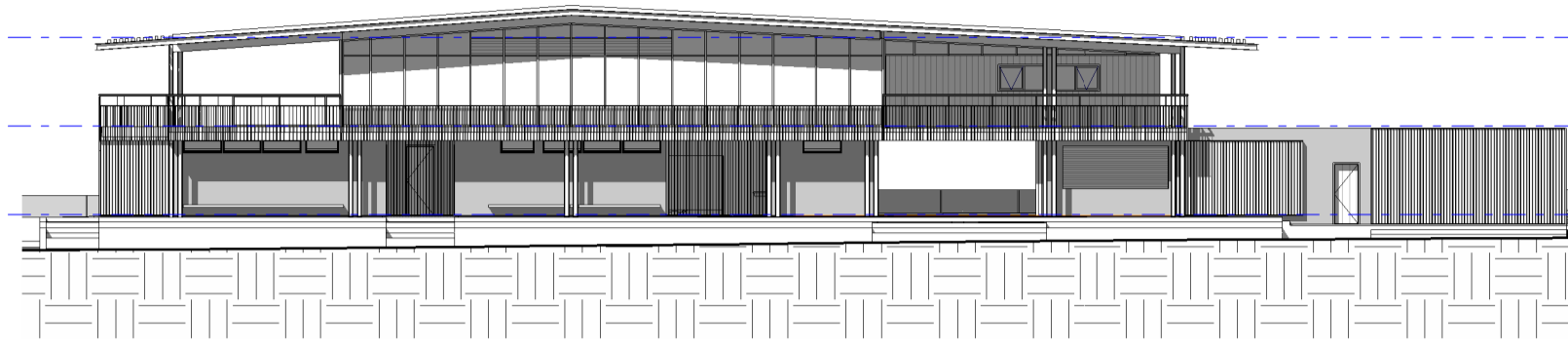


SUMMER

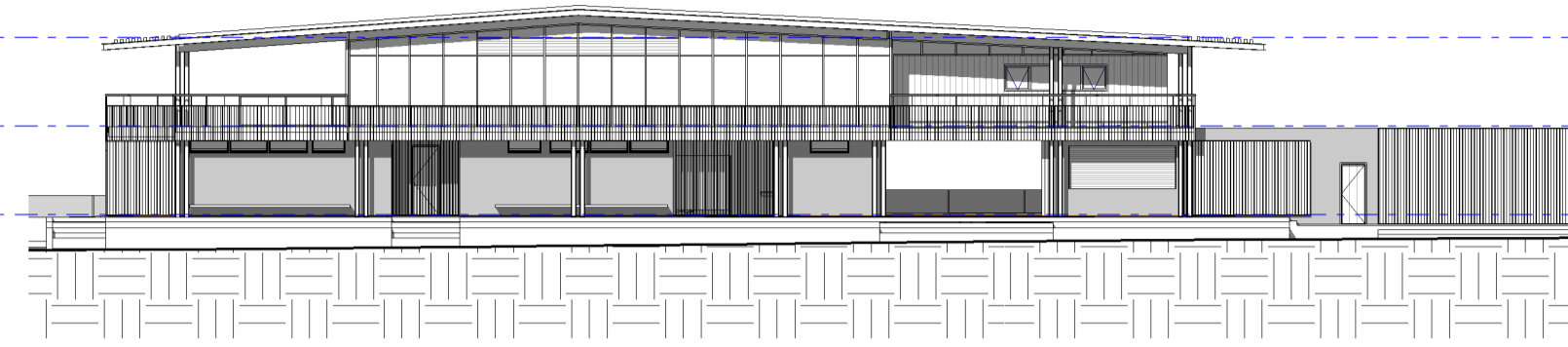
EQUINOX

WINTER

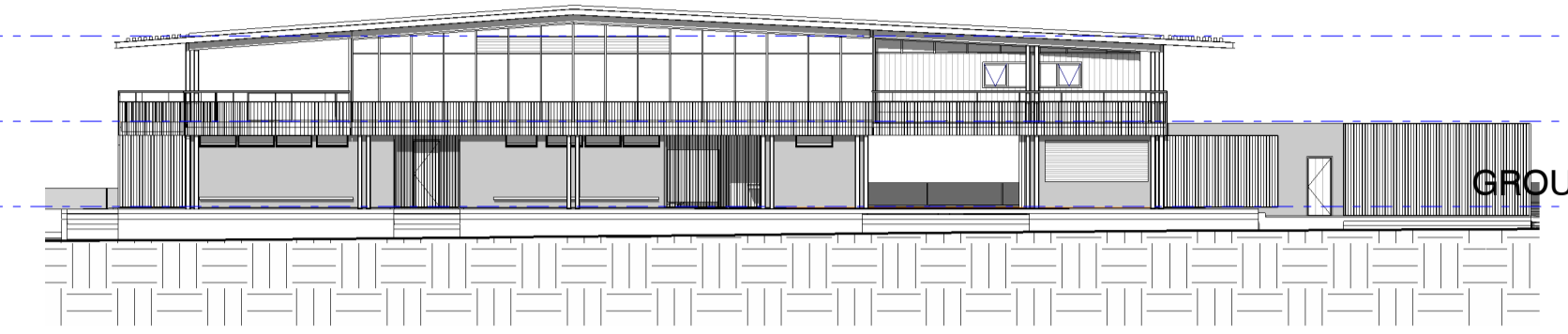
SOLAR STUDY OF SHADING TO NORTH FACADE



1 NORTH ELEVATION SUMMER 9AM
SK-21 1:250

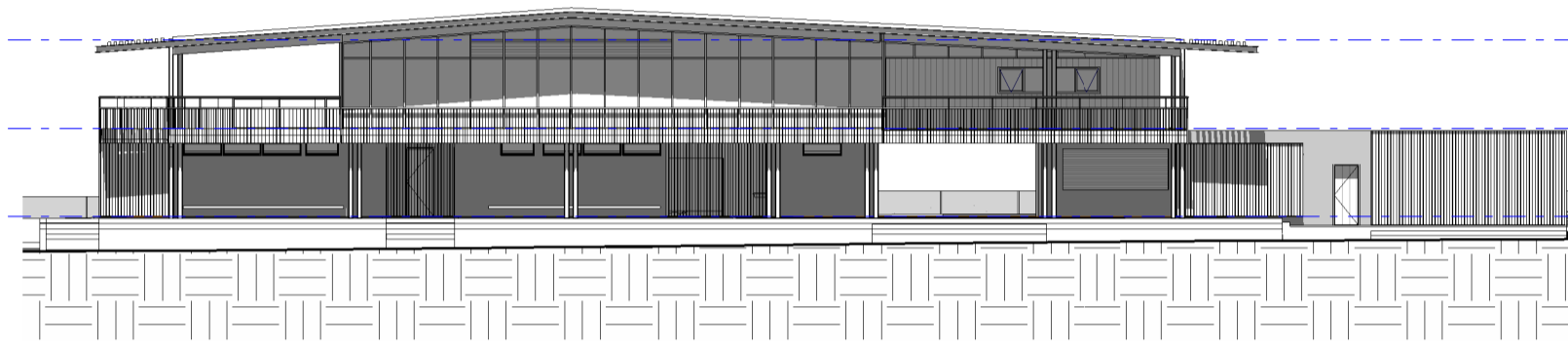


5 NORTH ELEVATION EQUINOX 9AM
SK-21 1:250

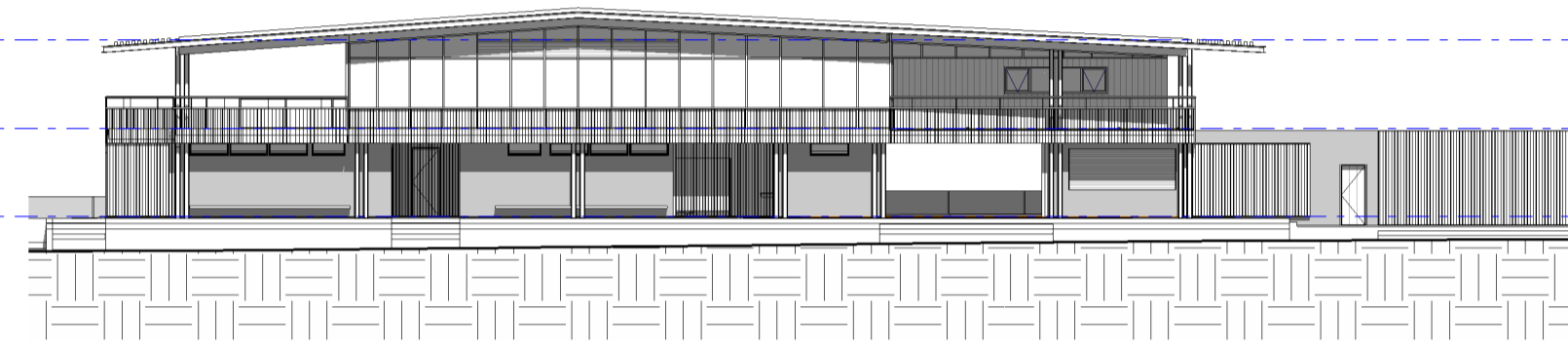


9 NORTH ELEVATION WINTER 9AM
SK-21 1:250

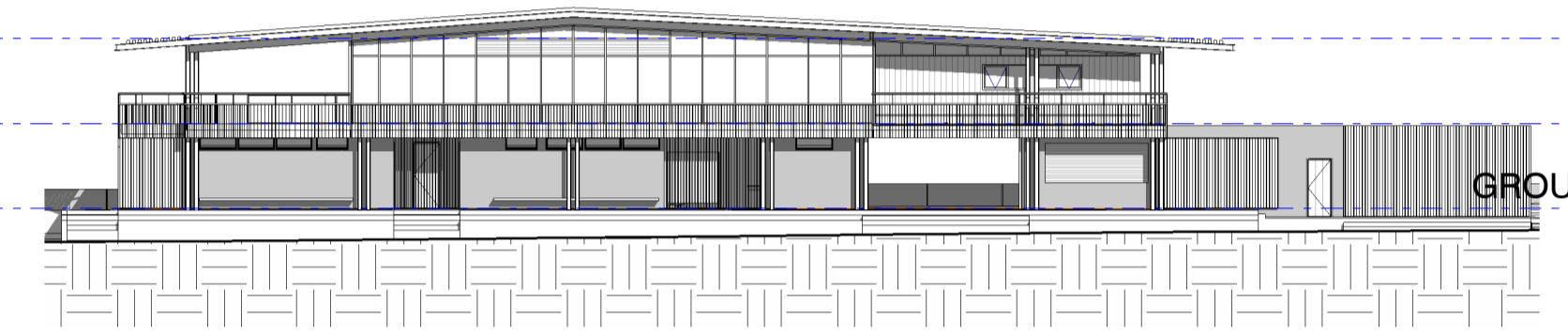
ROOF ▼
RL 46.750
LEVEL 1 ▼
RL 43.750
GROUND LEVEL ▼
RL 40.750



2 NORTH ELEVATION SUMMER 11AM
SK-21 1:250

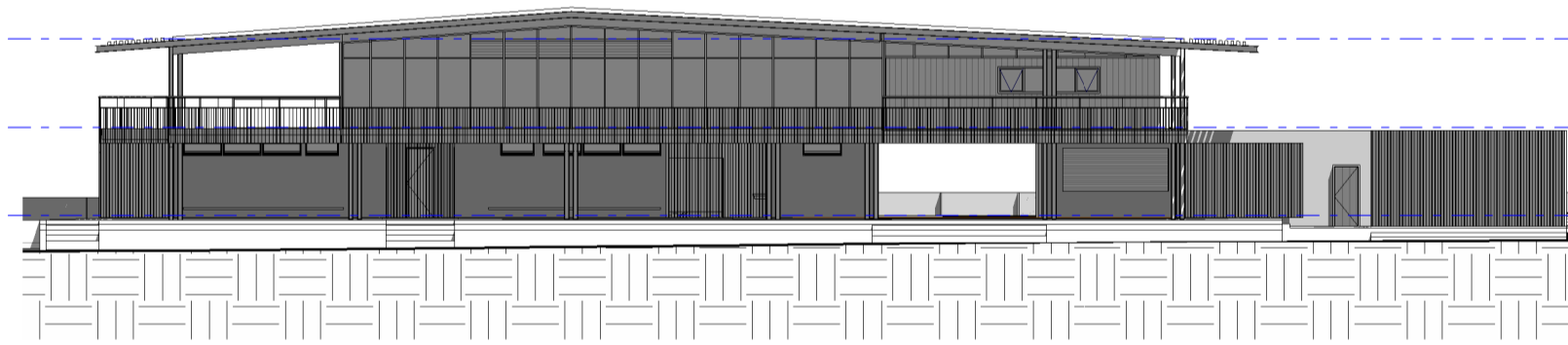


6 NORTH ELEVATION EQUINOX 11AM
SK-21 1:250

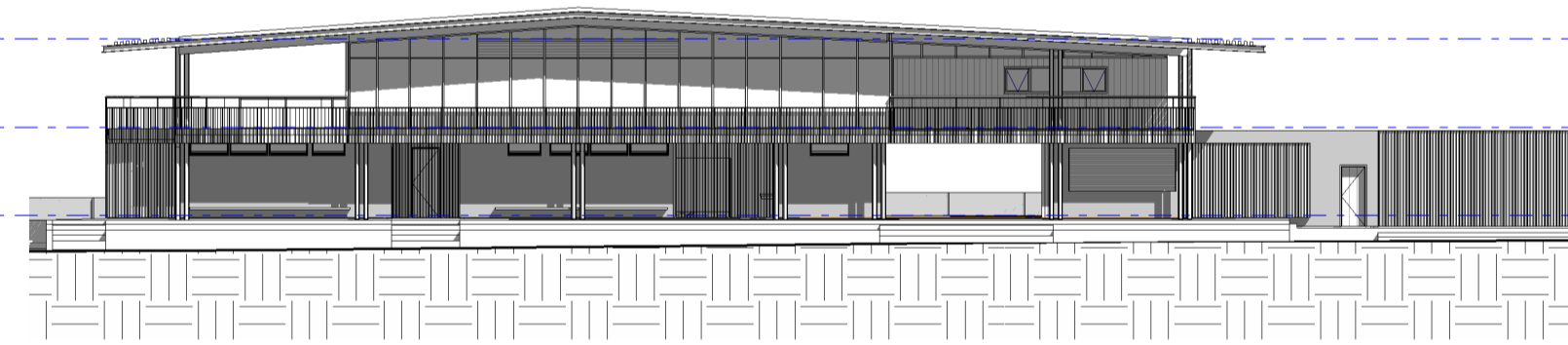


10 NORTH ELEVATION WINTER 11AM
SK-21 1:250

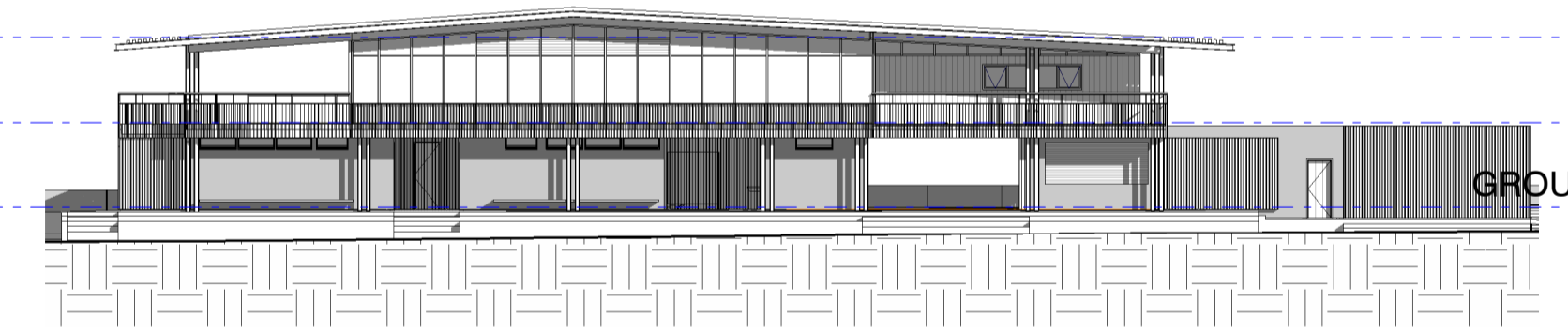
ROOF ▼
RL 46.750
LEVEL 1 ▼
RL 43.750
GROUND LEVEL ▼
RL 40.750



3 NORTH ELEVATION SUMMER 1PM
SK-21 1:250

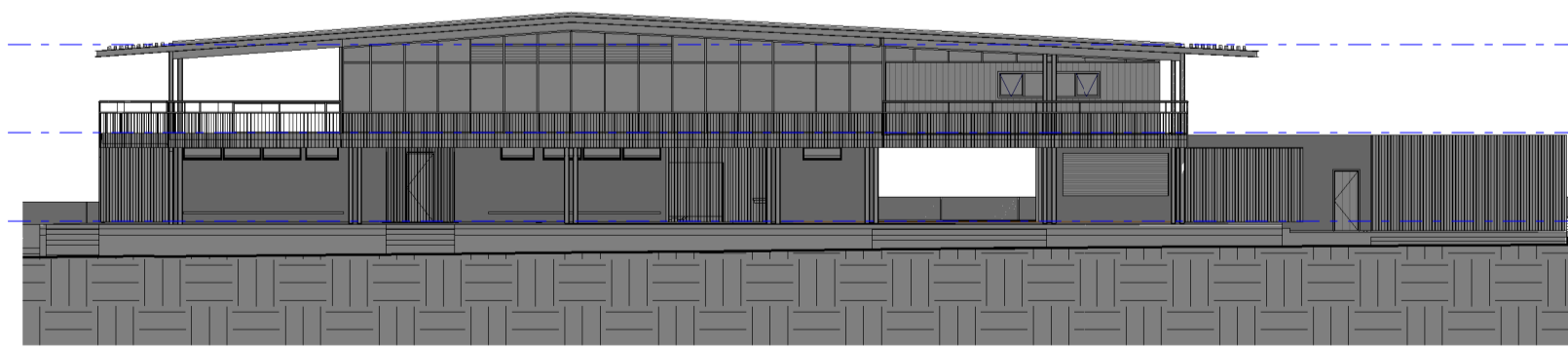


7 NORTH ELEVATION EQUINOX 1PM
SK-21 1:250

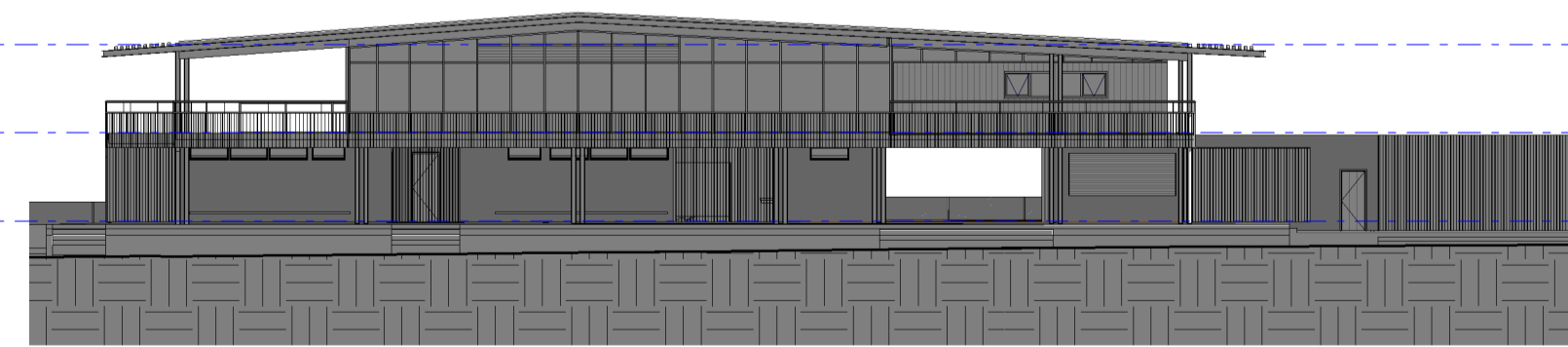


11 NORTH ELEVATION WINTER 1PM
SK-21 1:250

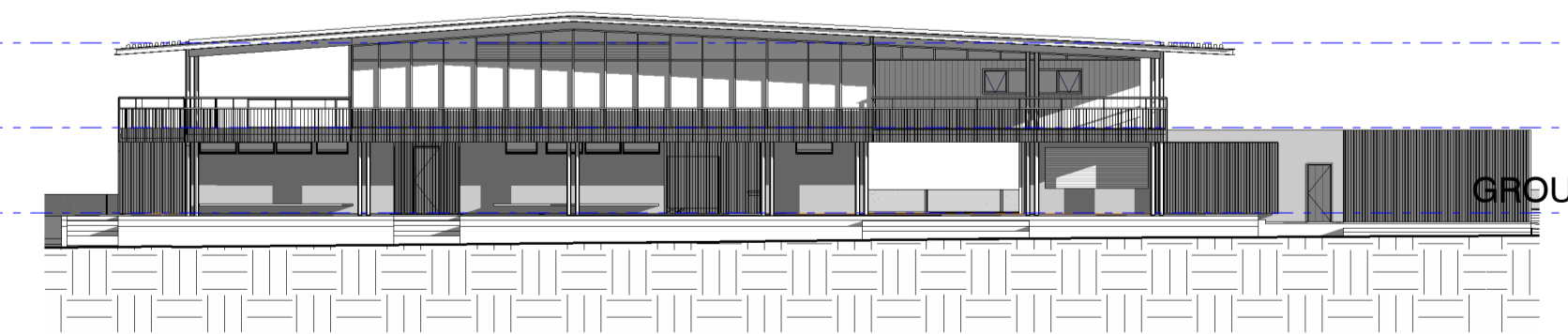
ROOF ▼
RL 46.750
LEVEL 1 ▼
RL 43.750
GROUND LEVEL ▼
RL 40.750



4 NORTH ELEVATION SUMMER 3PM
SK-21 1:250



8 NORTH ELEVATION EQUINOX 3PM
SK-21 1:250



16 NORTH ELEVATION WINTER 3PM
SK-21 1:250

ROOF ▼
RL 46.750
LEVEL 1 ▼
RL 43.750
GROUND LEVEL ▼
RL 40.750

DATE PRINTED: 18/06/2021 8:10:22 AM

ISSUE	DATE	SUBJECT	AUTHORISED
A	20/05/21	DRAFT DA FOR REVIEW	ARH
B	24/05/21	DRAFT FOR COMMENT	NK
C	15/06/21	DEVELOPMENT APPLICATION	ARH

THIS DRAWING SHOULD BE READ IN CONJUNCTION WITH ALL RELEVANT CONTRACTS, SPECIFICATIONS AND DRAWINGS. DIMENSIONS ARE IN MILLIMETRES. LEVELS ARE METRES. DO NOT SCALE OFF DRAWINGS. USE FIGURED DIMENSIONS ONLY. CHECK DIMENSIONS ON SITE. REPORT DISCREPANCIES IMMEDIATELY.

1:250 0 0.1 0.5 1 2 5 10m 20mm


PROJECT
BORONIA PARK SPORTS AND COMMUNITY FACILITY
PARK ROAD HUNTERS HILL

STATUS
DEVELOPMENT APPLICATION

CLIENT APPROVAL

SIGNED

CLIENT
MUNICIPALITY OF HUNTERS HILL



ARCHITECT
djird architects
T +612 9319 2955
ABN: 48 942 921 969
Nominated Architects:
Andrew Hipwell 6562
Daniel Beekwilder 6192
63 Myrtle Street
Chippendale NSW 2008
Sydney Australia
djird.com.au

DRAWN BY
Author

SCALE AT A1
1:250

ORIGIN DATE
05/18/21

DESCRIPTION
SHADOW DIAGRAMS SHEET 2

PROJECT No
20 425

DRAWING No
DA-902

REVISION
C